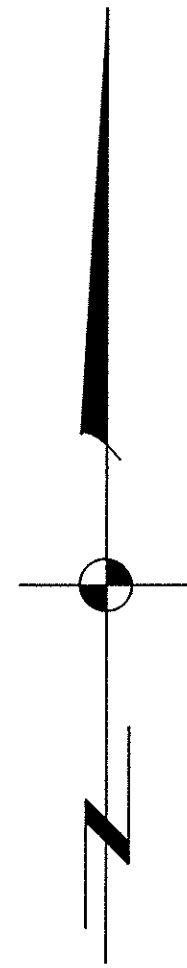
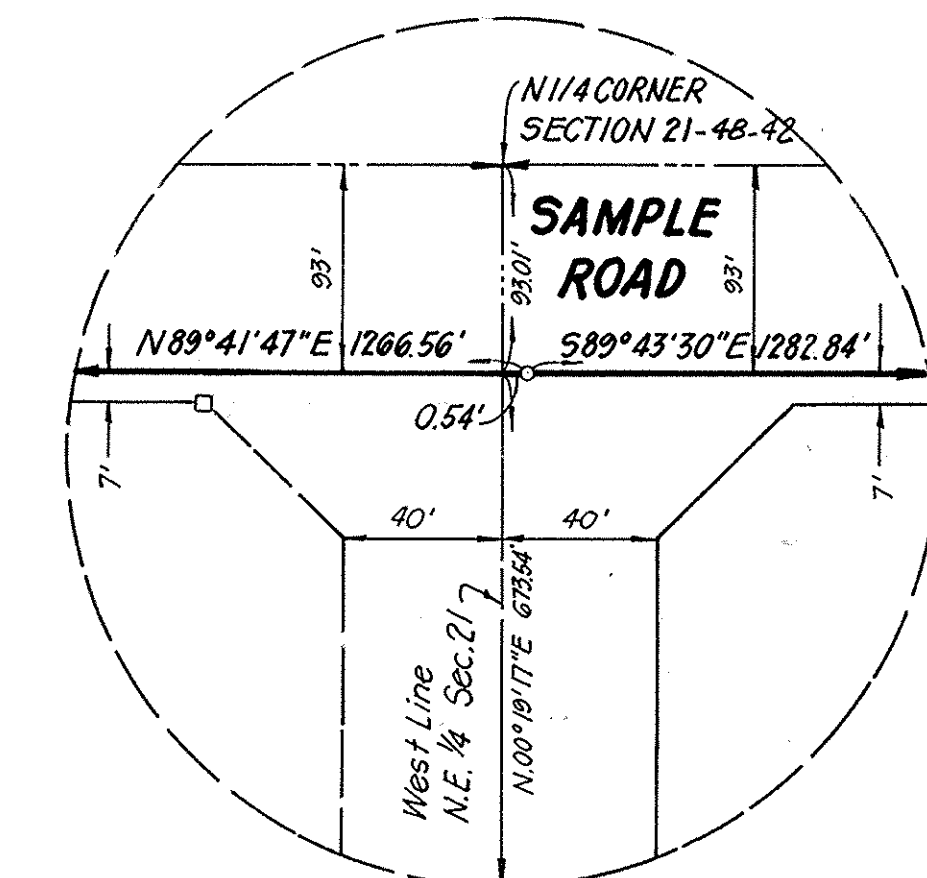


**A PARCEL OF LAND IN SECTION 21, TOWNSHIP 48 SOUTH, RANGE 42 EAST  
BROWARD COUNTY, FLORIDA**

[illegible]

1. ~~OPRM~~ INDICATES PERMANENT REFERENCE MONUMENT.
2. ~~OPRC~~ INDICATES PERMANENT CONTROL POINT.
3. SURVEY DATA IN FIELD BOOK 2064 PAGE 32-34
4. ELEVATIONS SHOWN HEREON ARE BASED ON THE NATIONAL GEODETIC VERTICAL DATUM OF 1929.
5. BEARINGS SHOWN HEREON ARE BASED ON POMPANO INDUSTRIAL PARK FIRST ADDITION (P.B.102, P.G. 6).
6. ~~=====~~ INDICATES LINE OF NON-VEHICULAR ACCESS.
7. AREA TABULATION:
 

Tracts A thru G	3,261,541 sq.ft.	74.8747 Ac.
Internal R/W	307,153 sq.ft.	7.0512 Ac.
T/R/W Sample Rd.	18,177 sq.ft.	0.4173 Ac.
<hr style="width: 100%; border: 0.5px solid black;"/>		
TOTAL	3,586,871 sq.ft.	82.3432 Ac.



**DETAIL**  
(NOT TO SCALE)

# DRC

PZ24-12000024

~~02/05/2025~~

**6999C**